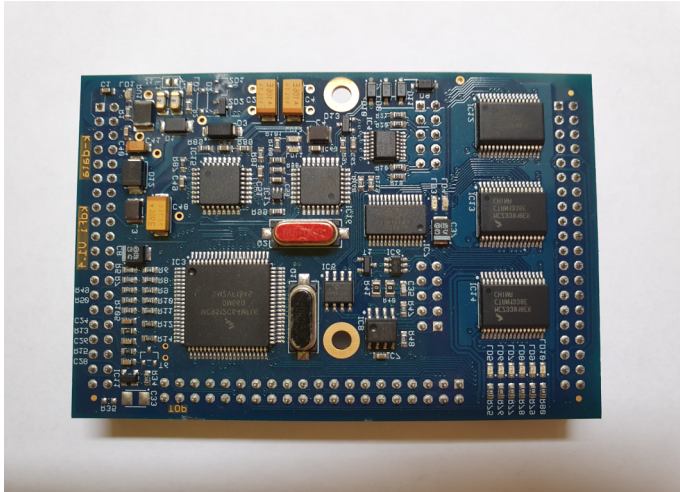


## Passive Zündspulen(Standard)

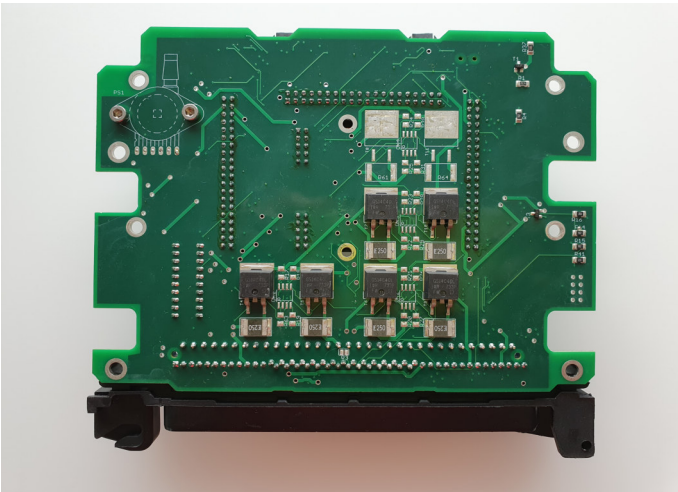
kdFi V1.4 Modul

z.B. BMW Serienzündspulen



nicht möglich (bis ca. 2017)

Originale Adapterplatine



Werkseinstellung:

Tunerstudio

Zündungseinstellung

→ keine Änderung  
der Softwareeinstellung

Ignition Options / Wheel Decoder

View Help

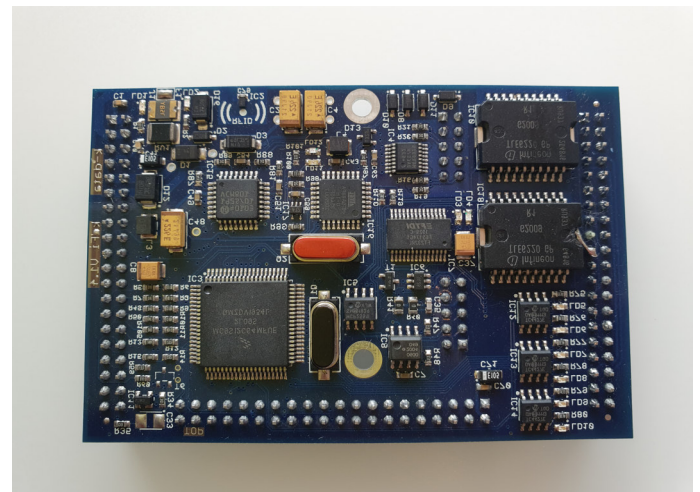
Ignition Options / Wheel Decoder

Spark Mode (Dizzy,EDIS,wheel)	Toothed wheel
Trigger Angle/Offset(deg)	0.00
Angle Between Main And Return(deg)	50.0
Oddfire First Angle	90
GM HEI/DIS Options	Off
Use Cam Signal If Available	Off
Oddfire Phasing	Alternate
Skip Pulses	3
Ignition Input Capture	Rising Edge
Spark Output	Going High
Number of coils	Wasted spark
Spark A Output Pin (D14 Preferred)	D14
Cam Input (see tooltip)	Cam input
Flip Polarity On Cam	Normal

## Aktive Zündspulen

kdFi V1.4a Modul

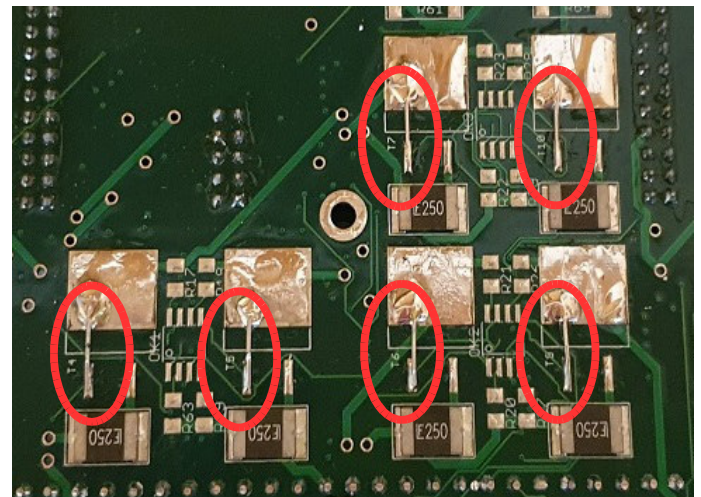
z.B. TFSI Zündspulen



möglich (ab ca. 2018)

Ausschnitt umgebaute Adapterplatine

IGBT entfernt, PIN 1 + 2 gebrückt

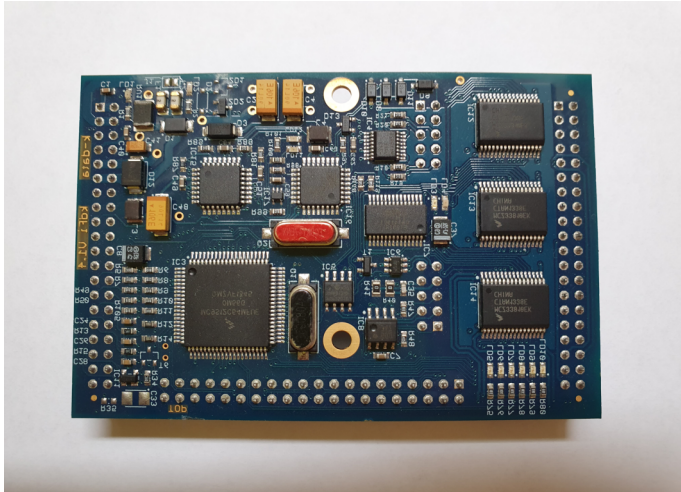




### Passive ignition coils (standard)

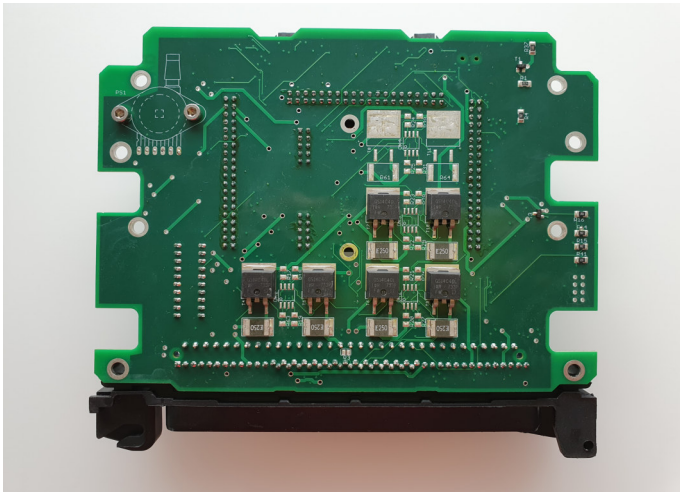
kdFi V1.4 Module

e.g. BMW Series ignition coils



not possible (until approx. 2017)

Original Adapter Board



Factory Setting:

Tunerstudio

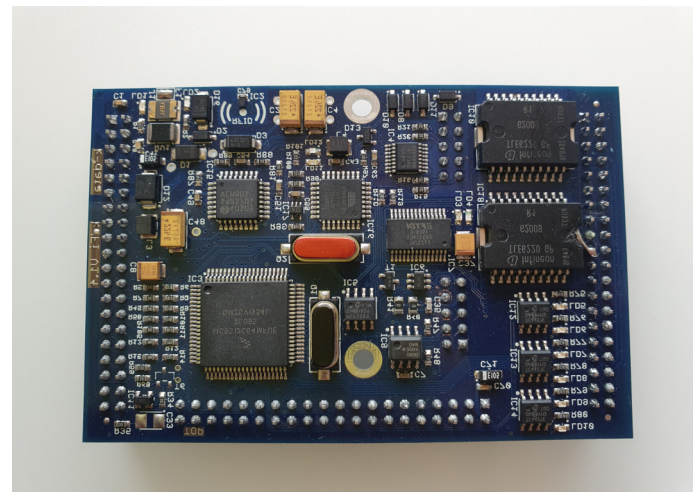
Ignition adjustment

→ no change in software setting

### Active ignition coils

kdFi V1.4a Module

e.g. TFSI ignition coils



possible (from approx. 2018)

Cutout of converted Adapter Board

IGBT removed, PIN 1 + 2 bridged

