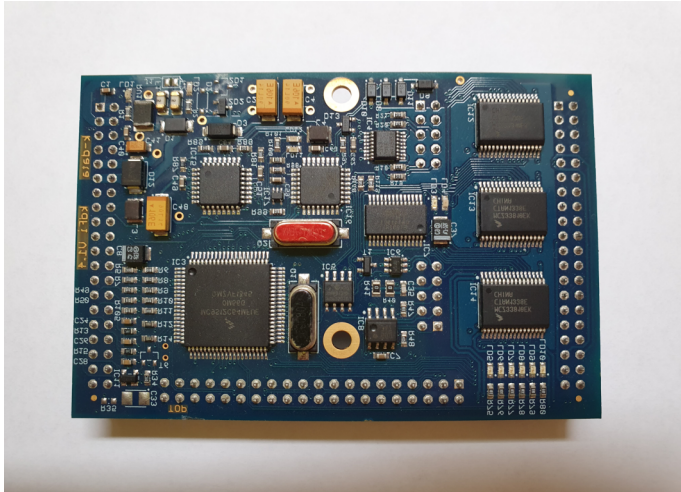


### Passive ignition coils (standard)

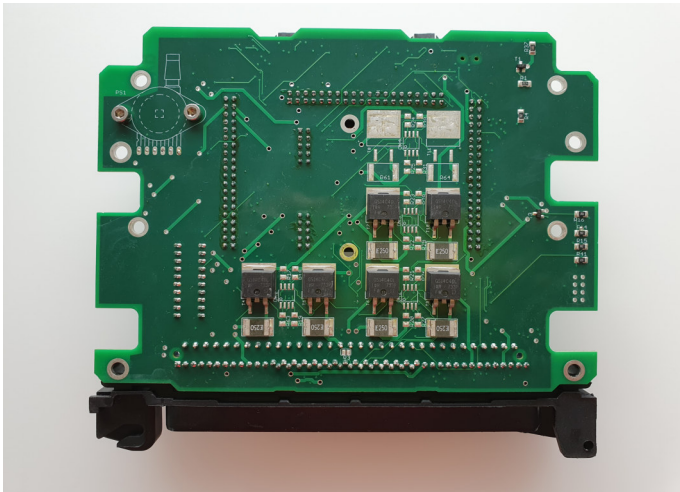
kdFi V1.4 Module

e.g. BMW Series ignition coils



not possible (until approx. 2017)

Original Adapter Board



Factory Setting:

Tunerstudio

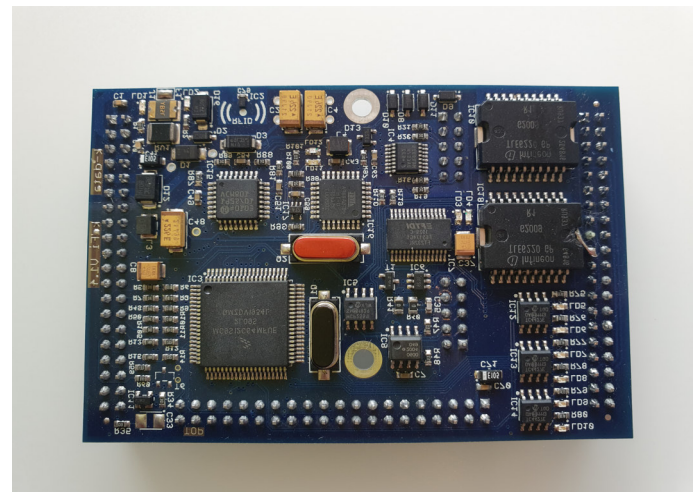
Ignition adjustment

→ no change in software setting

### Active ignition coils

kdFi V1.4a Module

e.g. TFSI ignition coils



possible (from approx. 2018)

Cutout of converted Adapter Board

IGBT removed, PIN 1 + 2 bridged

